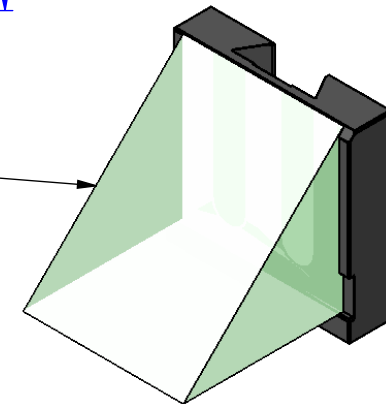
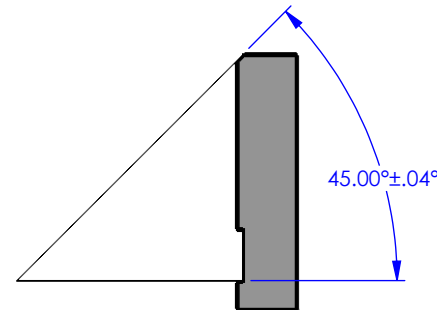
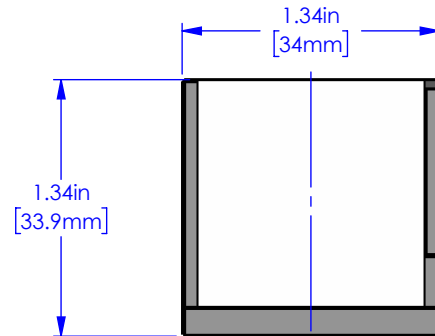
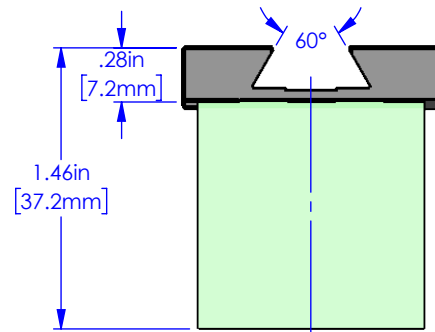



C60-30mm-CUBE-RA-MIRROR

THIS DRAWING AND ALL DATA INCLUDED IS THE PROPERTY OF APPLIED SCIENTIFIC INSTRUMENTATION AND THE INFORMATION CONTAINED HEREIN IS FOR GENERAL PRESENTATION PURPOSES ONLY AND MAY CHANGE AT ANY TIME. CONTACT ASI OR A FACTORY REPRESENTATIVE FOR PROJECT SPECIFIC ENGINEERING.



VARIOUS MIRROR OPTIONS

PART #	DESCRIPTION
C60-30mm-CUBE-RA-MIRROR	Enhanced aluminum coating, reflectivity avg 95% 450-650 nm, ~81% @ 850 nm, lambda/4 flatness 30mm Right Angle Mirror on dovetail holder.
C60-30mm-RA-MIRROR-SIL	Protected silver coating, reflectivity avg >98% 500-800 nm, lambda/4 flatness
C60-30mm-CUBE-MIRROR-D1	Dielectric coating, reflectivity avg >98% 450-800 nm and ~99% 550-750nm, lambda/4 flatness

	PROPRIETARY AND CONFIDENTIAL THE INFORMATION CONTAINED IN THIS DRAWING IS THE SOLE PROPERTY OF APPLIED SCIENTIFIC INSTRUMENTATION. ANY REPRODUCTION IN PART OR AS A WHOLE WITHOUT THE WRITTEN PERMISSION OF APPLIED SCIENTIFIC INSTRUMENTATION IS PROHIBITED.	APPLIED SCIENTIFIC INSTRUMENTATION 29391 W ENID RD EUGENE, OR 97402-9533 PHONE: (541)461-8181 FAX: (541)461-4018		UNLESS OTHERWISE SPECIFIED DIMENSIONS ARE IN INCHES .xx ± .01 .xxx ± .005 .xxxx ± .0002 FRACTIONS ± 1/32 ANGLES ± 1°		DESCRIPTION 30mm RA MIRROR ON DOVETAIL HOLDER	
		DRAWN BY/DATE M.ANTHONY 5/23/23	CHECKED BY/DATE X	SCALE 1:1	REV -	MATERIAL -	DRAWING # C60-30mm-CUBE-RA-MIRROR

5

4

3

2

1